

Research Activity Report
Supported by “Leading Graduate Program in Primatology and Wildlife Science”
 (Please be sure to submit this report after the trip that supported by PWS.)

2014. 10, 27	
Affiliation/Position	Primate Research Institute/ M1
Name	Natsumi Aruga

1. Country/location of visit
Sasagamine, Nagano Prefecture
2. Research project
Sasagamine Course
3. Date (departing from/returning to Japan)
2014. 10. 15 – 2014. 10. 18 (4 days)
4. Main host researcher and affiliation

5. Progress and results of your research/activity (You can attach extra pages if needed)
 Please insert one or more pictures (to be publicly released). Below each picture, please provide a brief description.

The scope of this report is Sasagamine Field Science Course over October 15th through 18th.

Walking around the hut

On the first day, we walked around the hut of Kyoto University with Dr. Sugiyama. He told us foxes and several other animals appeared recently around here. I raised expectations for watching some animals. About an hour later, we found a badger near the Sasagamine stock farm. We observed it eating something in a few minutes. In addition, we also found a fox and a raccoon dog near the hut. A fox run away from us immediately, but a raccoon dog was eating something. There exists Japanese macaque in this area, but we did not see in this time.

[Itinerary]

- 15/10/2014
Walking around the hut
- 16/10/2014
Map and Rope Course
Creek Climbing
- 17/10/2014
Mountain Climbing
- 18/10/2014
Returning

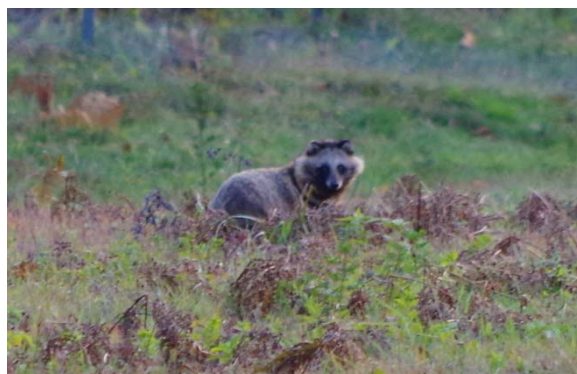


Figure1-2 Badger and Raccoon dog

Research Activity Report
Supported by “Leading Graduate Program in Primatology and Wildlife Science”
(Please be sure to submit this report after the trip that supported by PWS.)



Figure3 Walking around the hut of Kyoto University.

Map and Rope Course

On the second day, we studied basic techniques on a map and rope work from Mr. Higuchi in the morning. We learned how to locate ourselves on map, how to know the direction for the destination, and so on. After that, we learned 6 ways to tie a rope: ink knot, figure-eight knot, double fisherman's knot, bowline knot, and so on. At first, I felt difficulties with understanding, but at last I versed myself in making knots in 6 ways.



Figure4 Figure-eight knot

Mauntain Climbing

Research Activity Report
Supported by “Leading Graduate Program in Primatology and Wildlife Science”
(Please be sure to submit this report after the trip that supported by PWS.)

On the third days, we set out to go to the top of Mt. Hiuchi. It was a drizzle and cold day. We changed to set out to go for Kurosawa-pond. It was snowy when we arrived there. It was difficult for me to walk and scary. We backed to the hut at 2:00 p.m. We saw the snow line. After coming back, we learned how to do in bivouac. When we installed a small tent for bivouacking, we had to tie a knot of the rope. I had been possible to do in the room, but I could not outside. I fully realized more training and experience are needed.

[Itinerary: Mountain Climbing]

6:40 Start

7:40 Kurosawa-bridge

8:32 Junimagari

9:34 Fujimidaira

10:10 Kurosawa-pond

10:25 Kurosawa-pond (return)

12:00 Junimagari

12:33 Kurosawa-bridge

14:15 Goal



Figure5 Kurosawa-pond

Research Activity Report
Supported by “Leading Graduate Program in Primatology and Wildlife Science”
(Please be sure to submit this report after the trip that supported by PWS.)



Figure6 Bivouac exercise

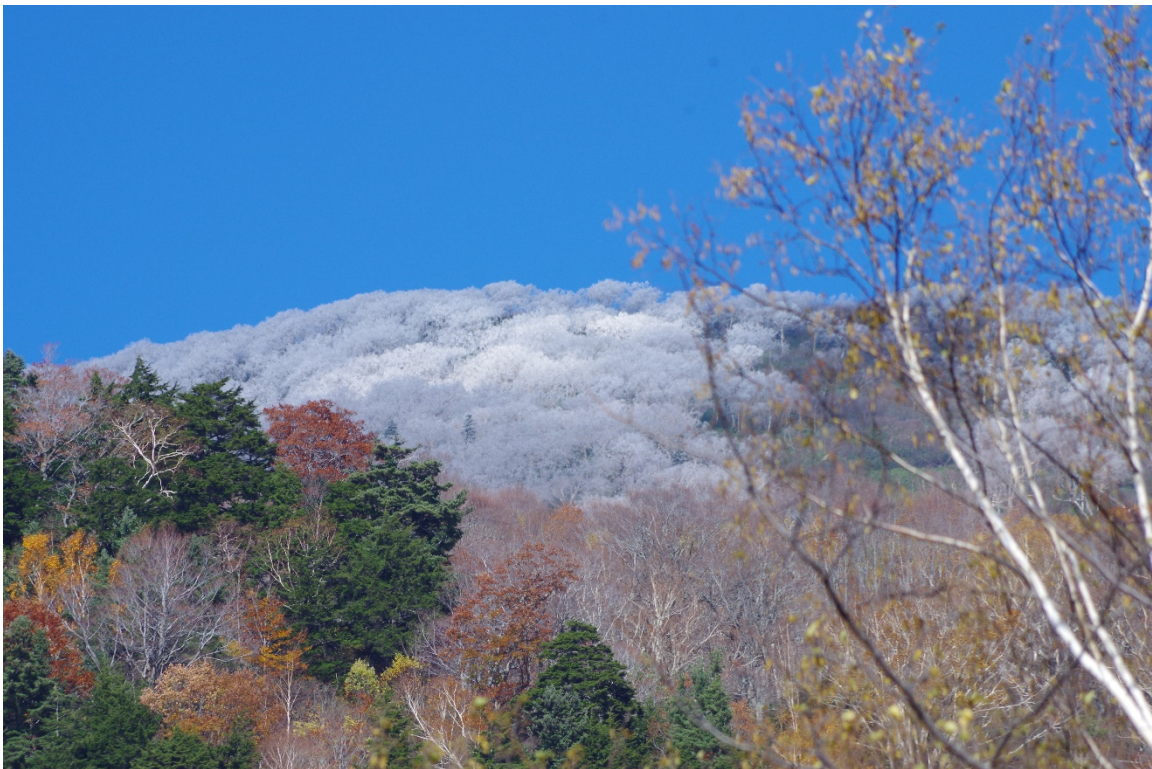


Figure7 We saw the snow line from the hut.

6. Others

I would like to express my appreciation to the PWS program and Prof. Tetsuro Matsuzawa for the opportunity to study at Sasagamine.