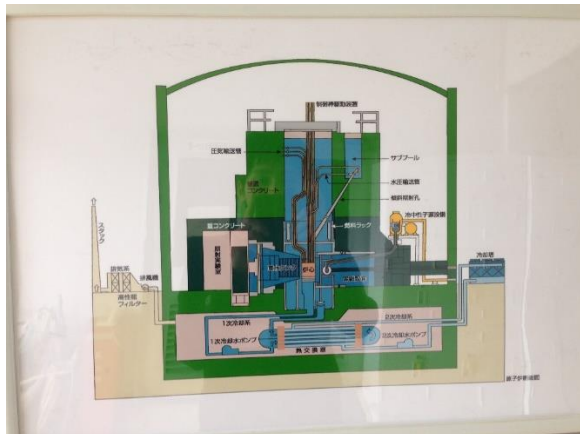


Research Activity Report
Supported by “Leading Graduate Program in Primatology and Wildlife Science”
(Please be sure to submit this report after the trip that supported by PWS.)

2015.4,15	
Affiliation/Position	M2 & L2 student of PRI in Kyoto University
Name	Kauzya Toda

1. Country/location of visit
Japan/ Kyoto City Zoo, Japan Monkey Center, Primatology Research Center, Seto Marine Biological Laboratory Center for Ecological Research, Research Reactor Institute
2. Research project
Inter-Laboratory Practice
3. Date (departing from/returning to Japan)
2015. 4. 8 – 2015. 4. 11 (4 days)
4. Main host researcher and affiliation
Kyoto University
5. Progress and results of your research/activity (You can attach extra pages if needed)
Please insert one or more pictures (to be publicly released). Below each picture, please provide a brief description.
<p>Inter-Laboratory Practice was conducted for the purpose of spreading our study insight by the visit of various research faculties. Simultaneously, it provides new graduated students a good place to communicate and interact. We visited 6 faculties Kyoto City Zoo, Japan Monkey Center, Primatology Research Institute, Seto Marine Biological Laboratory, Center for Ecological Research and Research Reactor Institute. Through this practice, we experienced the current state of the leading edge of scientific studies in Japan. I will introduce outlines of the faculties.</p> <p><u><i>Kyoto University Research Reactor Institute</i></u></p> <p>This institute plays roles to promote the research and education in the fields of nuclear energy and radiation application.</p>

Research Activity Report
Supported by “Leading Graduate Program in Primatology and Wildlife Science”
(Please be sure to submit this report after the trip that supported by PWS.)



Reactor

Seto Marine Biological Laboratory

This laboratory mainly has been carried out taxonomy and phylogeny of marine invertebrates for a long time.



The view from Seto marine biological laboratory

Research Activity Report
Supported by “Leading Graduate Program in Primatology and Wildlife Science”
(Please be sure to submit this report after the trip that supported by PWS.)



Jellyfish



crab



ray



moray

Research Activity Report
Supported by “Leading Graduate Program in Primatology and Wildlife Science”
(Please be sure to submit this report after the trip that supported by PWS.)



Plankton giving blue light

Kyoto City Zoo

Kyoto City Zoo was established in 1903, under the support of citizens and municipal government. And it has the second longest history as a zoo in Japan.



fox

Research Activity Report
Supported by “Leading Graduate Program in Primatology and Wildlife Science”
(Please be sure to submit this report after the trip that supported by PWS.)



squirrel



raccoon dog

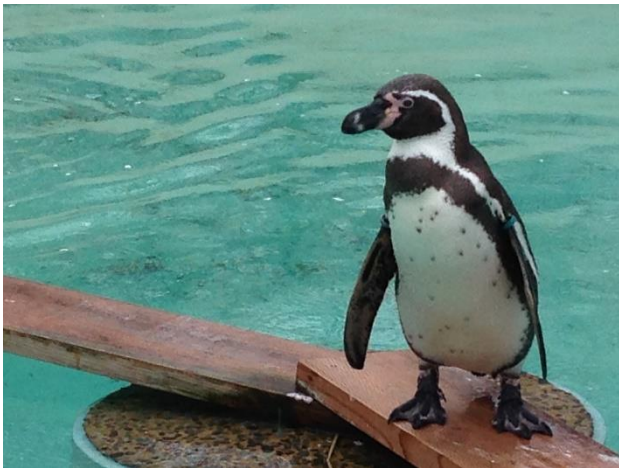


lion

Research Activity Report
Supported by “Leading Graduate Program in Primatology and Wildlife Science”
(Please be sure to submit this report after the trip that supported by PWS.)



Tiger



Penguin

Center for Ecological Research

This center plays a role as an inter-university joint-use facility aimed at promoting basic research and international cooperative work in the field of ecology.

Primate Research Institute

Primatology is a research field, which aims to elucidate what human is like. This institute studies human and non-human primates from various viewpoints.

Research Activity Report
Supported by “Leading Graduate Program in Primatology and Wildlife Science”
(Please be sure to submit this report after the trip that supported by PWS.)

Japan Monkey Center

This center has 66 different species in primates, that is, we can watch the most species there in world zoological gardens.



Squirrel monkey



Lemur

6. Others

This practice was supported by PWS Leading Program. I am grateful to PWS and Kyoto University.