


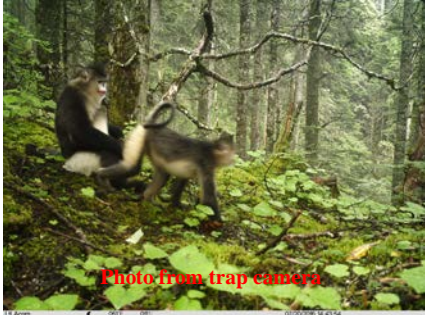
**Research Activity Report**  
Supported by “Leading Graduate Program in Primatology and Wildlife Science”

|                             |                             |
|-----------------------------|-----------------------------|
| 2017. 12. 19                |                             |
| <b>Affiliation/Position</b> | Wildlife Research Center/D1 |
| <b>Name</b>                 | Liu Jie                     |

|   |
|---|
| <b>1. Country/location of visit</b>   |
| China, Yunnan, Lijiang, Laojun Mountain National Park   |
| <b>2. Research project</b>  |
| Field work for my PhD study on Yunnan snub nosed monkey   |
| <b>3. Date (departing from/returning to Japan)</b>  |
| 2017. 08. 15 – 2017. 11. 29 (107 days)  |
| <b>4. Main host researcher and affiliation</b>  |
| Liao Haohong<br>Affiliation/Position: Lijiang Office of The Nature Conservancy  |
| <b>5. Progress and results of your research/activity</b> (You can attach extra pages if needed)   |
| Please insert one or more pictures (to be publicly released). Below each picture, please provide a brief description.   |
| <div style="display: flex; align-items: flex-start;">  <div style="width: 60%;"> <p>During this field work in Laojun mountain national park, I recorded data from horizontal plane with the help from drone. Yunnan snub nosed monkey like the other primates are temperamental, quick-witted and sensitive to noise. Drone took a great part in my study during this period of study by</p> </div> </div> <p>increase the encounter rate with my study target. With the help from drone I can always foreclosed the possibility of monkeys' trace in the other parts of Laojun mountain. Therefore, I can search for the monkeys faster and more accurate. I tried to conduct an observation study on wild Yunnan snub nosed monkey in Laojun mountain national park by recording the GPS location from 4 ways: drone observation, direct observation, feces record and trap camera recording.</p> |

**Research Activity Report**  
**Supported by “Leading Graduate Program in Primatology and Wildlife Science”**

The drone helped me in tracking and positioning the monkeys. And drone also joined daily patrol work in Laojun mountain. I also got data from infrared camera. I set 70 trap cameras in the core zone of Laojun mountain national park together with the staffs of TNC based on the previous

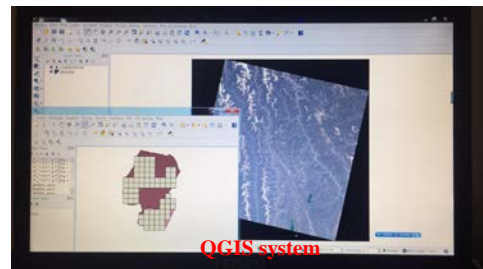


observation. I will reorganize all the photos to obtain GPS data in different months, just like what I did in direct observation and feces record. The situation of observation in Loajun mountain is still kind like hard. I was trapped in the wild for 2days by the heavy snow. I was informed by TNC that the



construction of my mobile camp and observation station was been suspended by Lijiang Forestry Bureau again. However, the data collection is relatively optimistic.

I will try to use GIS system to help me to analysis all my GPS data. And I will learn to use QGIS software as long as I am back to Kyoto.



## 6. Others

I very much appreciate to all the rangers for their time and energy to accompany me in the Laojun mountain for conducting my study, and to all the supports from PWS.