



Research Activity Report
Supported by “Leading Graduate Program in Primatology and Wildlife Science”
 (Please be sure to submit this report after the trip that supported by PWS.)

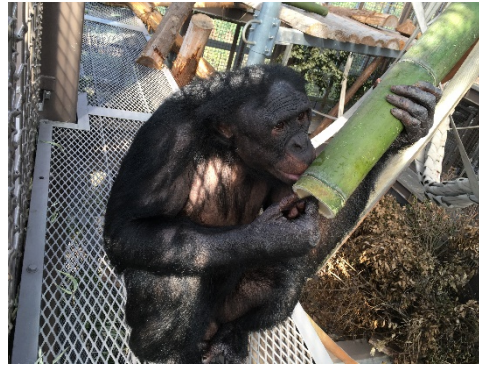
	2018. July, 10
Affiliation/Position	Primate Research Institute/M1
Name	Shohei Shibata

1. Country/location of visit
Kumamoto, Japan
2. Research project
Animal Welfare Course at Kumamoto Sanctuary.
3. Date (departing from/returning to Japan)
14 November 2017 – 17 November 2017
4. Main host researcher and affiliation
Dr. Satoshi Hirata, Dr. Naruki Morimura
5. Progress and results of your research/activity (You can attach extra pages if needed)
<p>For this course, we had the opportunity to visit Kumamoto Sanctuary. This course was held for learning about environmental enrichment in chimpanzees and bonobos.</p> <p>Nov 14th : Arrived at Kumamoto, received lecture about facility Nov 15th : Made enrichment devices and confirmed reaction of chimpanzees Nov 16th : Set devices for bonobos Nov 17th : Presentation about result</p> <p><u>Making enrichment devices</u></p> <p>After receiving lectures concerning enrichment, all students divided into two groups and each group made enrichment devices for both chimpanzees and bonobos. We aimed to make the devices which both chimpanzees and bonobos could use for long time and made three devices using ropes and pipes filled with honey, which has been called the “Endless Honey Trap”. We expected chimpanzees and bonobos would repeat pulling the rope and licking the honey soaked into that rope. Another group aimed to make low-cost and eco- friendly devices by using natural materials.</p> <div style="display: flex; justify-content: space-around; align-items: flex-end;"> <div style="text-align: center;">  <p>“Endless Honey Trap”</p> </div> <div style="text-align: center;">  <p>“KAGUYA”</p> </div> </div> <p><u>Observing reactions of chimpanzees and bonobos</u></p> <p>We located all devices we made in and around the enclosures of the chimpanzees and bonobos and observed how they used those devices for thirty minutes. We found differences in reaction between the two species. Although bonobos used our devices for shorter duration than chimpanzees used, they visited the devices much more frequently than chimpanzees. It is possible that these two species have a difference in degree of attachment for foods or unfamiliar items. It seemed to be difficult to create feeding devices which are suitable for both species.</p>

Research Activity Report
Supported by “Leading Graduate Program in Primatology and Wildlife Science”
(Please be sure to submit this report after the trip that supported by PWS.)



Bonobo using the “Endless Honey Trap”



Bonobo using the “KAGUYA”

Through this course, I learned the difficulty involved in planning and creating enrichment devices and what considerations are needed before planning. Even if we design devices not for both species but for each species respectively, we still had difficult in accurately predicting how the animals would use it. This course was a really valuable experience for me as a student, who studies wild chimpanzees and bonobos, to observe their behavior and response toward humans in a captive environment. I would like to continue learning about and studying themes from the viewpoint which I learned from this course.

6. Others

I would like to thank the PWS program for supporting this course.

I also would like to express my appreciation to the lecturers and participants of this course.