

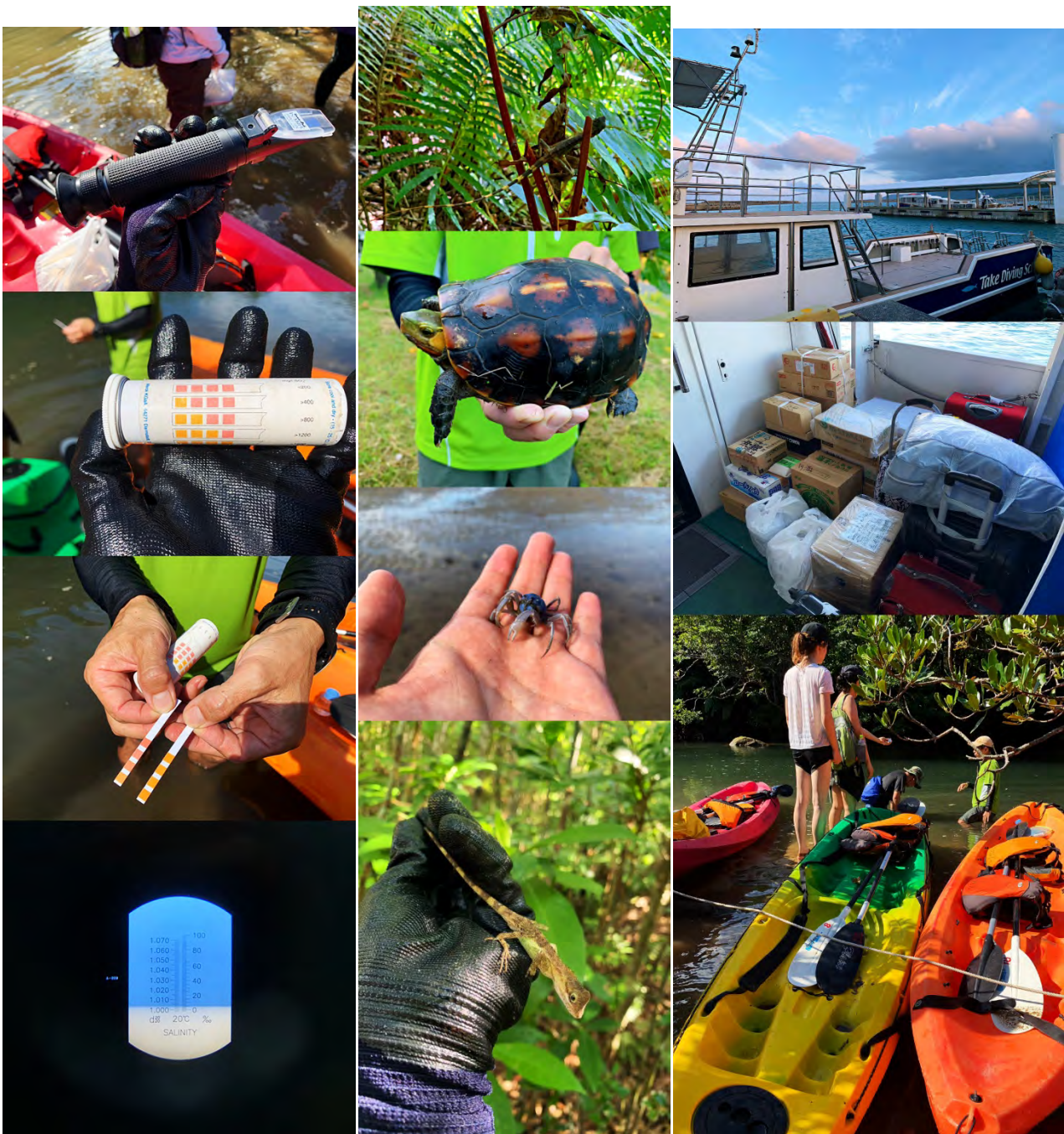
Research Activity Report
Supported by “Leading Graduate Program in Primatology and Wildlife Science”

2018. 12. 03

Affiliation/Position	Wildlife Research Center/D3
Name	Liu Jie

1. Country/location of visit
University of the Ryukyus Nishihara, Nakagami District, Okinawa Prefecture, Japan
2. Research project
PWS academic year 2018 Field Course in Iriomote-Island
3. Date (departing from/returning to Japan)
2018. 11. 07 – 2018. 11. 11 (5 days)
4. Main host researcher and affiliation
Prof. MATSUZAWA Tetsuro Affiliation: PWS/Kyoto University Prof. KOSHIMA Shiro Affiliation: PWS/Kyoto University Assist. prof. FUKUSHIMA Seiko Affiliation: PWS/Kyoto University
5. Progress and results of your research/activity (You can attach extra pages if needed)
Please insert one or more pictures (to be publicly released). Below each picture, please provide a brief description.
<p>It was really a great fun time to join the course on appreciation of fauna and flora on Iriomote Island and visit tropical biosphere research center university of the Ryukyus. We arrived at the Iriomote Island on Nov 7th. I was told that she is the largest island of the Yaeyam Islands in the deep south western waters of Okinawa Prefecture. Iriomote Island is covered by prosperous tropical rainforests and mangroves swamps, however, the only free-ranging primate there is the human being. Iriomote has a population of only 2.450 people on about 300 Km² area (130 km at margin). I am so fascinated with Iriomote wild cat and really looking forward to see one during the trip. Even I know it almost impossible. At least, I did see three specimen of Iriomote wildcat in the wildlife center on the island.</p> <p>I had some experience on trekking along mountain stream in the mangrove forests of Thailand. Nonetheless, it was my very first time to participate a reassured ramble or even a cozy river kayaking in a mangrove forests without worrying about crocodiles and anacondas. It was also my first time to try snorkeling. It was a immersive enjoyment to really get into the ocean as a marine animal.</p> <p>This course is really more than meet the eye. The only suggestion that I want to say is Could we have some more time to not only to participate but also to experience each and every activities?</p>

Research Activity Report
Supported by “Leading Graduate Program in Primatology and Wildlife Science”



Appreciation of fauna and flora on Iriomote Island

Research Activity Report
Supported by “Leading Graduate Program in Primatology and Wildlife Science”



Tropical rainforests and mangroves swamps

Research Activity Report
Supported by “Leading Graduate Program in Primatology and Wildlife Science”



A statue of Iriomote Wildcat



Group Photo

6. Others

I very much appreciate to all the supports from PWS, and to all the hosts for bringing us this wonderful course.